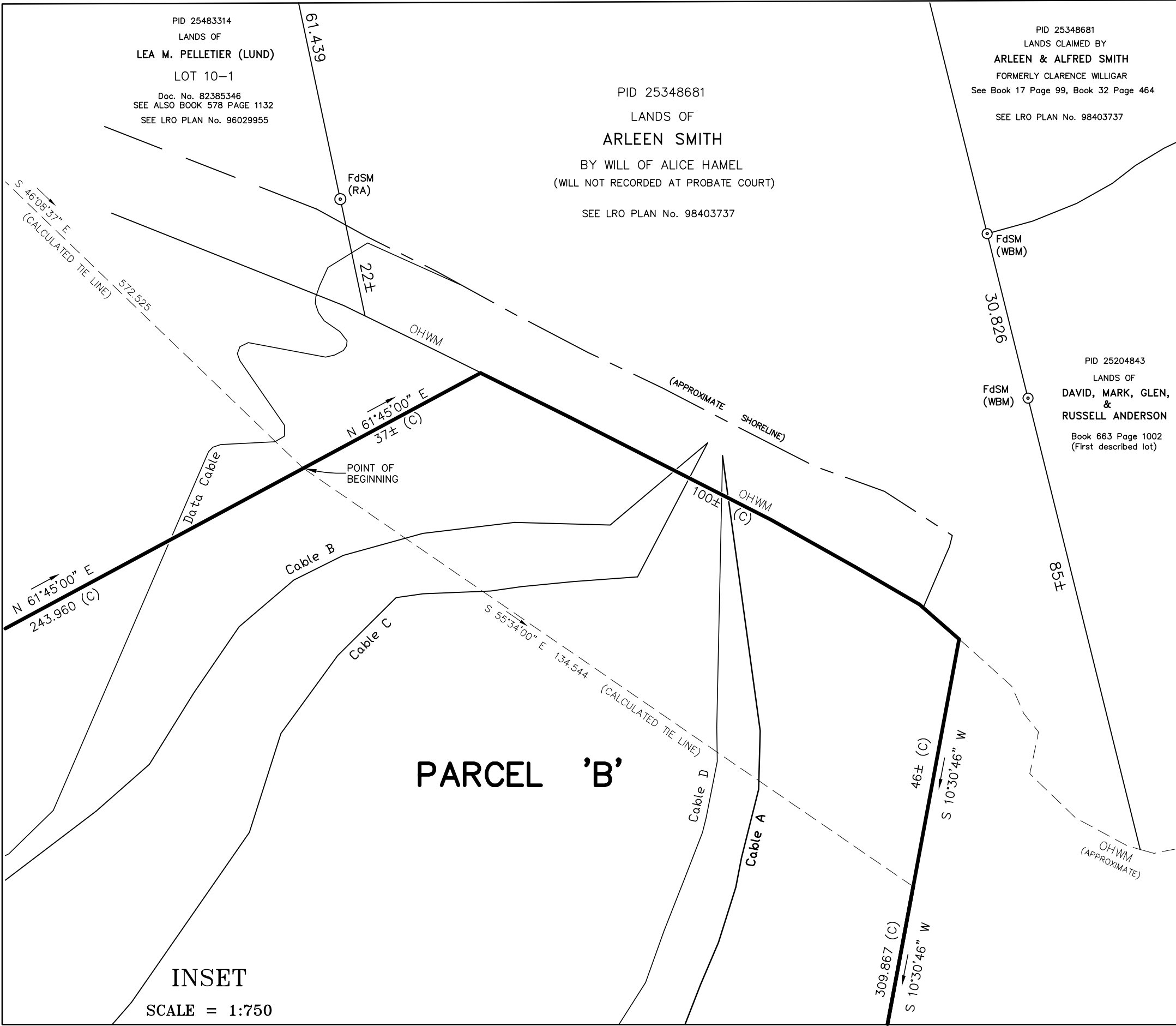


3" M.T.M. GRID NORTH
C.M. 64°30' WEST



SYMBOL LEGEND:	
BOUNDARIES DEALT WITH BY THIS PLAN	
PID	PARCEL IDENTIFICATION NUMBER
NSCM	NOVA SCOTIA COORDINATE MONUMENT
Ha	HECTARES
OHWM	ORDINARY HIGH WATER MARK FROM FIELD MEASUREMENTS (ELEVATION 5.325 metres)
(C)	CALCULATED
FdSM	FOUND SURVEY MARKER
(RA)	RUSSELL ATKINSON N.S.L.S.
(WBM)	W.B. MacDONALD N.S.L.S.
	OTHER BOUNDARIES

NOTES:

BEARINGS ARE REFERRED FROM THE 3" MODIFIED TRANSVERSE MERCATOR GRID NORTH, CENTRAL MERIDIAN 64°30' WEST LONGITUDE, (ZONE 5), AND WERE DERIVED FROM GLOBAL POSITIONING SYSTEM OBSERVATIONS RELATING NEARBY BOUNDARY POINTS TO NOVA SCOTIA COORDINATE MONUMENT NUMBERS 15028, 15029, 15031 & 26207. (ATS77, 1992 VALUES IN METRES).

GPS LOCALIZATION: SINGLE POINT TO NSCM 15028.

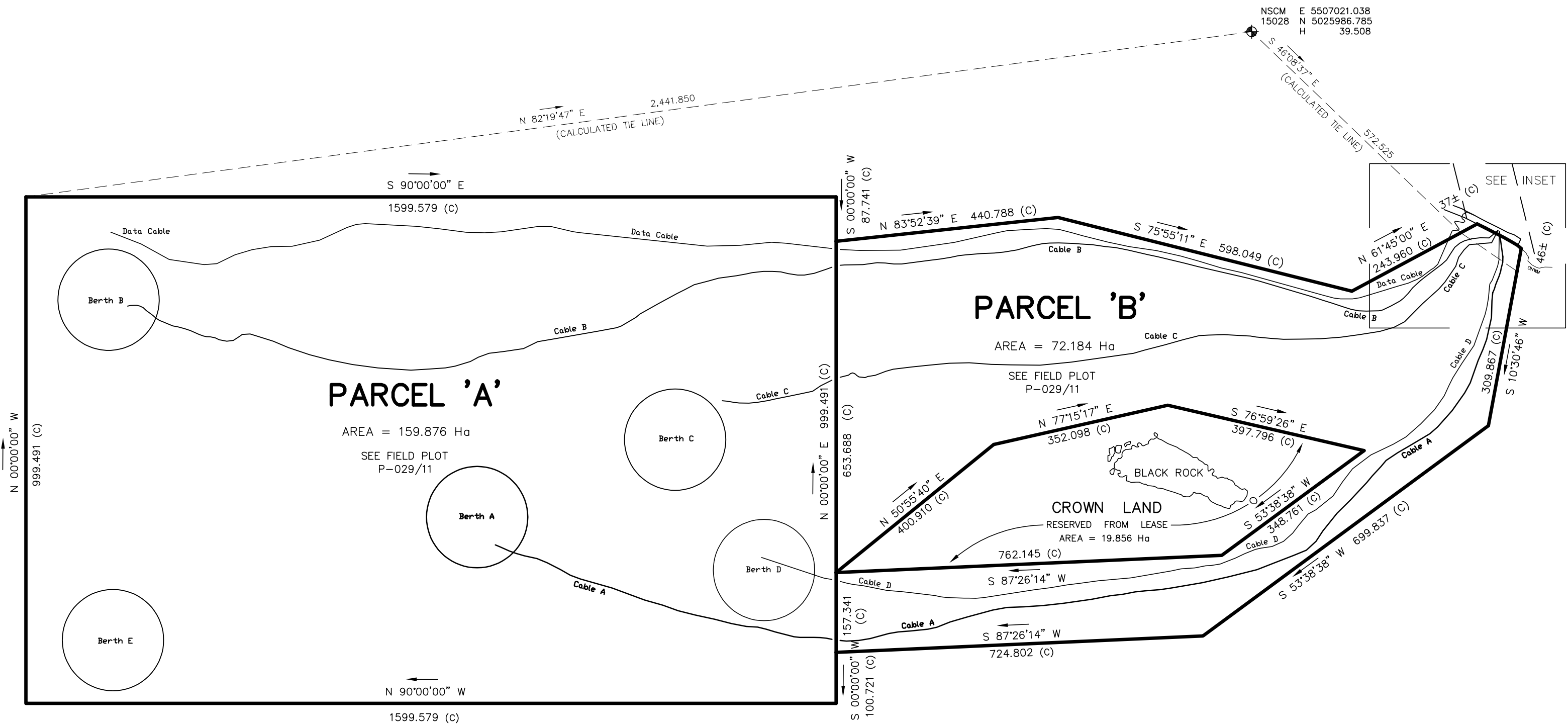
FIELD SURVEYS WERE CARRIED OUT 16 JULY 2008 TO 15 SEPTEMBER 2016.

VALUES WERE NOT ADJUSTED; SCALE FACTOR WAS NOT APPLIED.

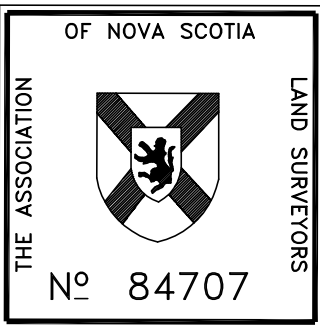
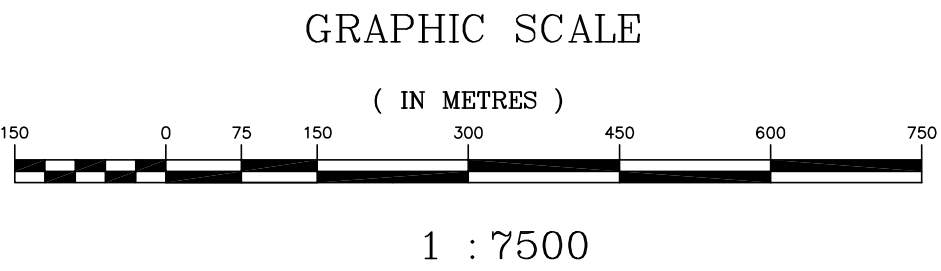
DISTANCES SHOWN ARE IN METRES, TO CONVERT TO FEET DIVIDE BY 0.3048.

TOPOGRAPHIC FEATURES WERE DETERMINED BY RADIAL OBSERVATION.

CABLE LOCATIONS SHOWN WERE PLOTTED USING INFORMATION SUPPLIED BY SEAFORTH GEOSURVEYS ON 09 SEPTEMBER 2016.

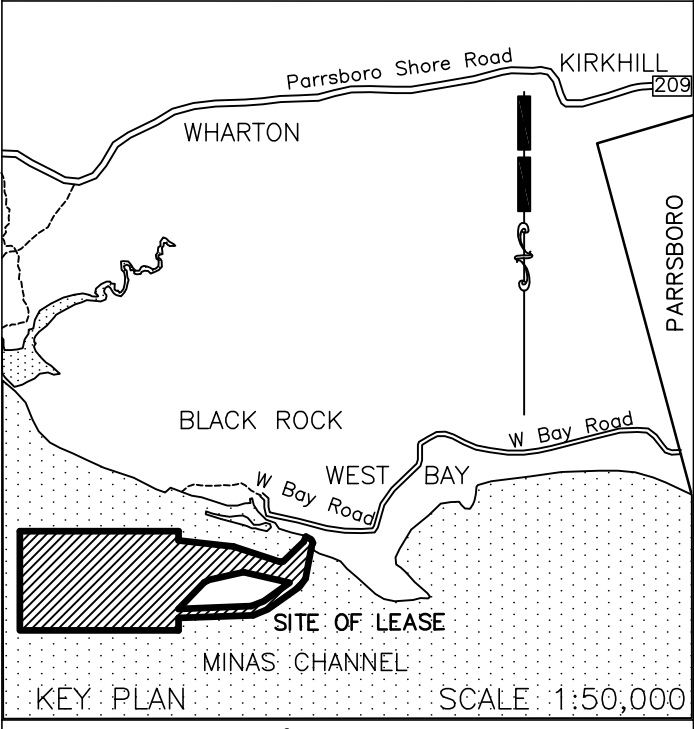


MINAS CHANNEL
(TIDAL)



PLAN OF SURVEY OF
PARCELS 'A' & 'B'
SUBMERGED CROWN LAND
MINAS CHANNEL (BLACK ROCK)
CUMBERLAND COUNTY, NOVA SCOTIA

Scale 1 : 7500



SURVEYOR'S CERTIFICATE

I, W. B. MacDonald Nova Scotia Land Surveyor, hereby certify that the survey represented by this plan was conducted under my supervision, and that the survey and plan were made in accordance with the Land Surveyors Act, regulations and standards made thereunder. Dated this 22nd. day of December, 2016.

W. B. MacDonald N.S.L.S.

INDEX SHEET 51	RESOURCE MAPS
C.L.F.S G-17	21H/08-U1, U2

ORDER OF SURVEY	S-043/16
TRANSACTION ID	3098671
FIELD PLOT	P-125/16

